

FSFF Members Favorite Places to Fish



Wednesday, March 7, 2018

Speed Dating FSFF Style!



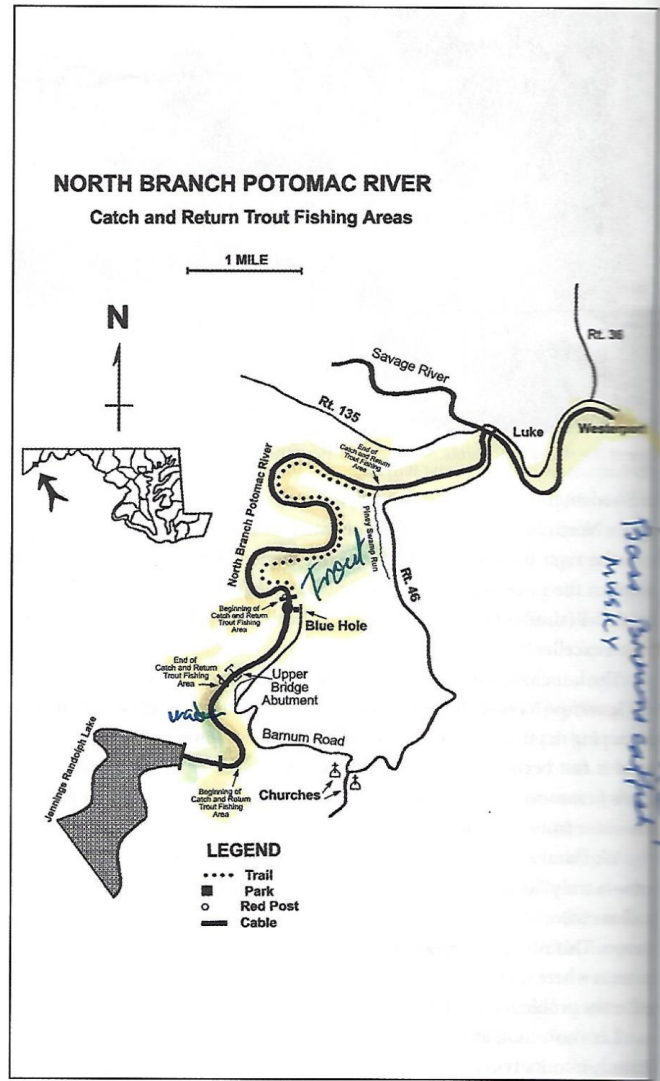
Wednesday, March 7, 2018

FSFF Members Favorite Places to Fish

- Denis LaCroix: North Branch Potomac River, Maryland
- Mark Bange: Severn River, Maryland
- Larry Meyer: Patapsco River, Maryland
- Joe Bruce: Concord Lake, Delaware
- John Scarborough: Belize
- Mike Mattia: Ingrams Pond, Delaware
- Glenn Davis: Sierra Nevada's Trout Streams
- Gary Grey: Casselman River, Maryland
- Rich Batiuk: Monocacy River, Maryland

Denis LaCroix

North Branch Potomac River



tailwater that
fishers who p
(above the r
each section

The Lower

Whenever w
Eastern bea
East. Altho
striking tha
a valley, bet
Its generally
river often r
er's beauty is
North Branc
any river in t
a big bear or

As we ha
with an aver
is not a prob

There ar
on the lower
Barnum Roa
abutments o
yards above
the lower en
with a not-so
beginning o
for about th
the river. Th
of water afte
erates fish-re

The dow
and covers ab
huge holes o

POTOMAC RIVER

Water Trail

The North Branch
in Allegany County

MAP THIRTEEN

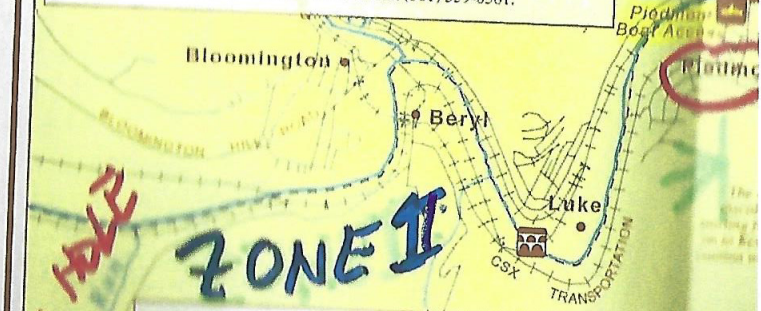
Westernport, Md.
to Dawson, Md.

Small rapids, rocky river bottom and rolling water make this section of the North Branch exciting and fun. Features along this trail include a series of small island and railroad bridges as well as higher landmarks such as the UPRC wastewater treatment facility, Stony Run bridge and the town of Keyser.

Paddlers should be aware that the Savage River Dam is located approximately 7 miles upstream of the Westernport boat access. Releases from the dam can affect river levels unexpectedly. At periods of low flow, paddlers may have to portage.

SAVAGE RIVER DAM

The Savage River Dam is located on the Savage River approximately 5.5 miles above Bloomington. The original dam was built in 1952 by the Army Corps of Engineers for flow control and directly affects river levels along this area of the North Branch. The release of water from the dam into the river below makes the area a popular location for whitewater canoe competitions and Olympic kayak racing trials. The Upper Potomac River Commission, which owns and operates the dam, supplies water for competitions each spring. For more information on the dam or scheduled releases call (301) 359-0361.

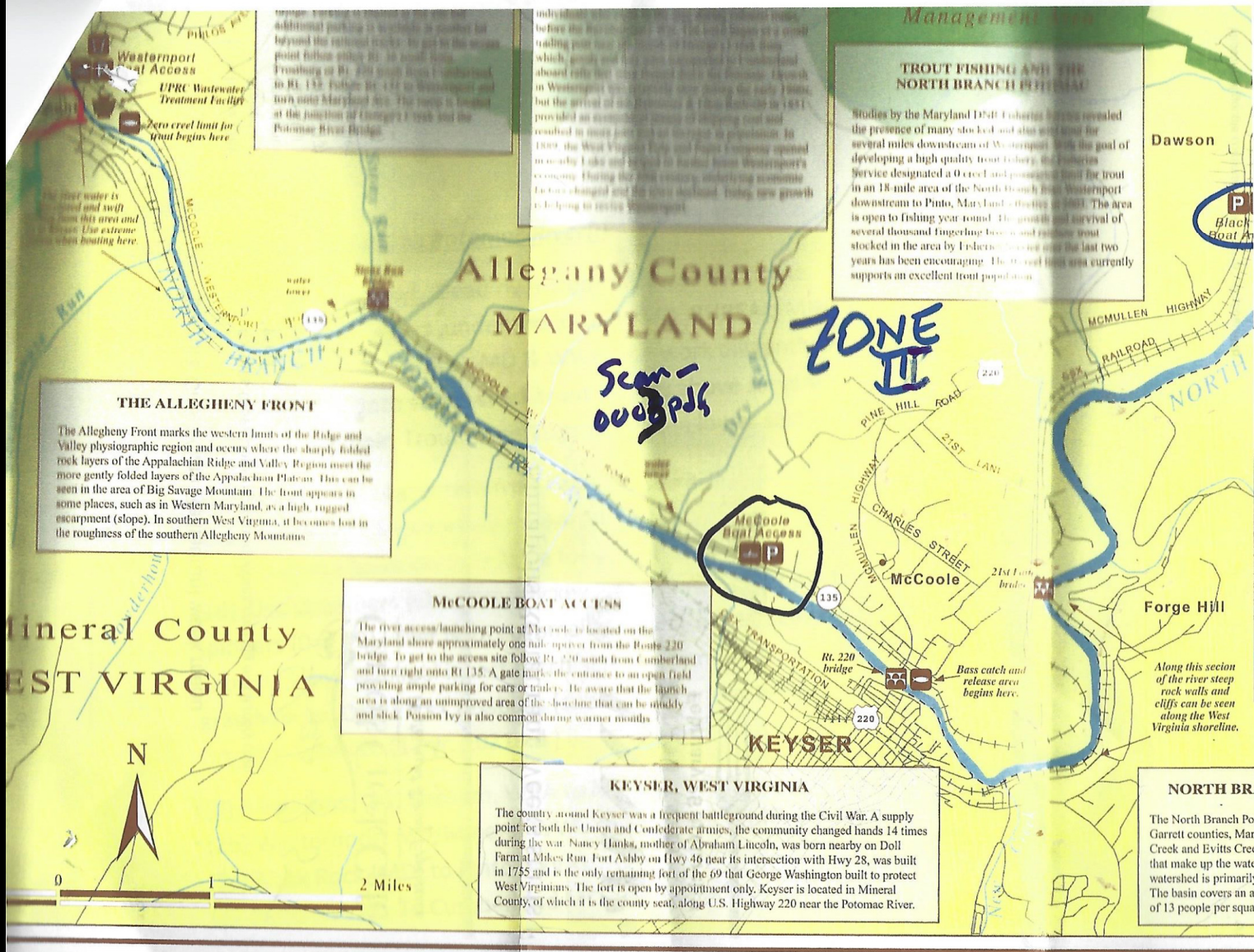


WESTVACO CORPORATION

The Westvaco Corporation is one of the major producers of paper and paperboard in the United States. The paper mill located at Luke was incorporated in 1899 as the West Virginia Pulp and Paper Company and has been a major industry in the region since that time. Paddlers should note that the river between Luke and Keyser is discolored due to effluents from both Westvaco and the UPRC wastewater treatment facility and should use extreme caution while boating in this area. Swimming and taking fish from this section is not advised. Despite the cloudy brown appearance of the water, improvements at the Westvaco Paper Mill have resulted in much improved water quality in the North Branch over the past several years.

LEGEND

PERMANENT FLOOD ZONE		Waterway	
SPRINKLE FLOOD ZONE		Roadway	
CRAGGLEDGE FLOOD ZONE		Railroad	
WATERWAY FLOOD ZONE		Trail	
WATERWAY FLOOD ZONE		Soft water or cities	
WATERWAY FLOOD ZONE		boat ramp	



Westernport Boat Access
UPRC Wastewater Treatment Facility
Zero creel limit for trout begins here

Additional parking is available in wooded lot beyond the railroad tracks. To get to the access point follow either Rt. 135 south from Westernport or Rt. 220 south from Cumberland and turn onto Maryland Ave. The route is located at the junction of George's Creek and the Potomac River Bridge.

Individuals who are interested in fishing should contact the West Virginia Dept. of Natural Resources before the fishing season begins. The river begins its southward trail just west of the junction of the 21st Lane which, southward, then joins the Potomac River in Westernport. The river was dammed in the early 1900s, but the arrival of the Potomac & Ohio Railroad in 1851 provided an economical means of shipping coal and resulted in many jobs and an increase in population. In 1909, the West Virginia Park and Forest Company opened nearby Lake and helped to further boost Westernport's economy. During the 1900s, underlying economic factors changed and the area declined. Today, new growth is helping to revive Westernport.

Management Area

TROUT FISHING AND THE NORTH BRANCH POTOMAC

Studies by the Maryland DNR Fisheries Service revealed the presence of many stocked and also wild trout for several miles downstream of Westernport. With the goal of developing a high quality trout fishery, the Fisheries Service designated a 0 creel and possession limit for trout in an 18-mile area of the North Branch from Westernport downstream to Pinto, Maryland. Effective in 2003, the area is open to fishing year-round. The growth and survival of several thousand fingerling brook and rainbow trout stocked in the area by Fisheries Service over the last two years has been encouraging. The 0-creel limit area currently supports an excellent trout population.

THE ALLEGHENY FRONT

The Allegheny Front marks the western limits of the Ridge and Valley physiographic region and occurs where the sharply folded rock layers of the Appalachian Ridge and Valley Region meet the more gently folded layers of the Appalachian Plateau. This can be seen in the area of Big Savage Mountain. The front appears in some places, such as in Western Maryland, as a high, rugged escarpment (slope). In southern West Virginia, it becomes lost in the roughness of the southern Allegheny Mountains.

McCOOLE BOAT ACCESS

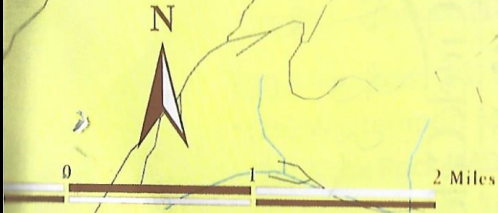
The river access/launching point at McCoole is located on the Maryland shore approximately one mile upstream from the Route 220 bridge. To get to the access site follow Rt. 220 south from Cumberland and turn right onto Rt. 135. A gate marks the entrance to an open field providing ample parking for cars or trailers. Be aware that the launch area is along an unimproved area of the shoreline that can be muddy and slick. Poison Ivy is also common during warmer months.

KEYSER, WEST VIRGINIA

The country around Keyser was a frequent battleground during the Civil War. A supply point for both the Union and Confederate armies, the community changed hands 14 times during the war. Nancy Hanks, mother of Abraham Lincoln, was born nearby on Doll Farm at Miles Run. Fort Ashby on Hwy 46 near its intersection with Hwy 28, was built in 1755 and is the only remaining fort of the 69 that George Washington built to protect West Virginians. The fort is open by appointment only. Keyser is located in Mineral County, of which it is the county seat, along U.S. Highway 220 near the Potomac River.

NORTH BR.

The North Branch Potomac River watershed, Mar. Creek and Evitts Creeks that make up the water watershed is primarily the basin covers an area of 13 people per square



Scenic Overlook
ZONE III

McCoole Boat Access

Bass catch and release area begins here.

Along this section of the river steep rock walls and cliffs can be seen along the West Virginia shoreline.

The Severn River at Jonas Green



Mark Bange
mbange54@gmail.com
410-591-5254



Primary Severn Target Fish



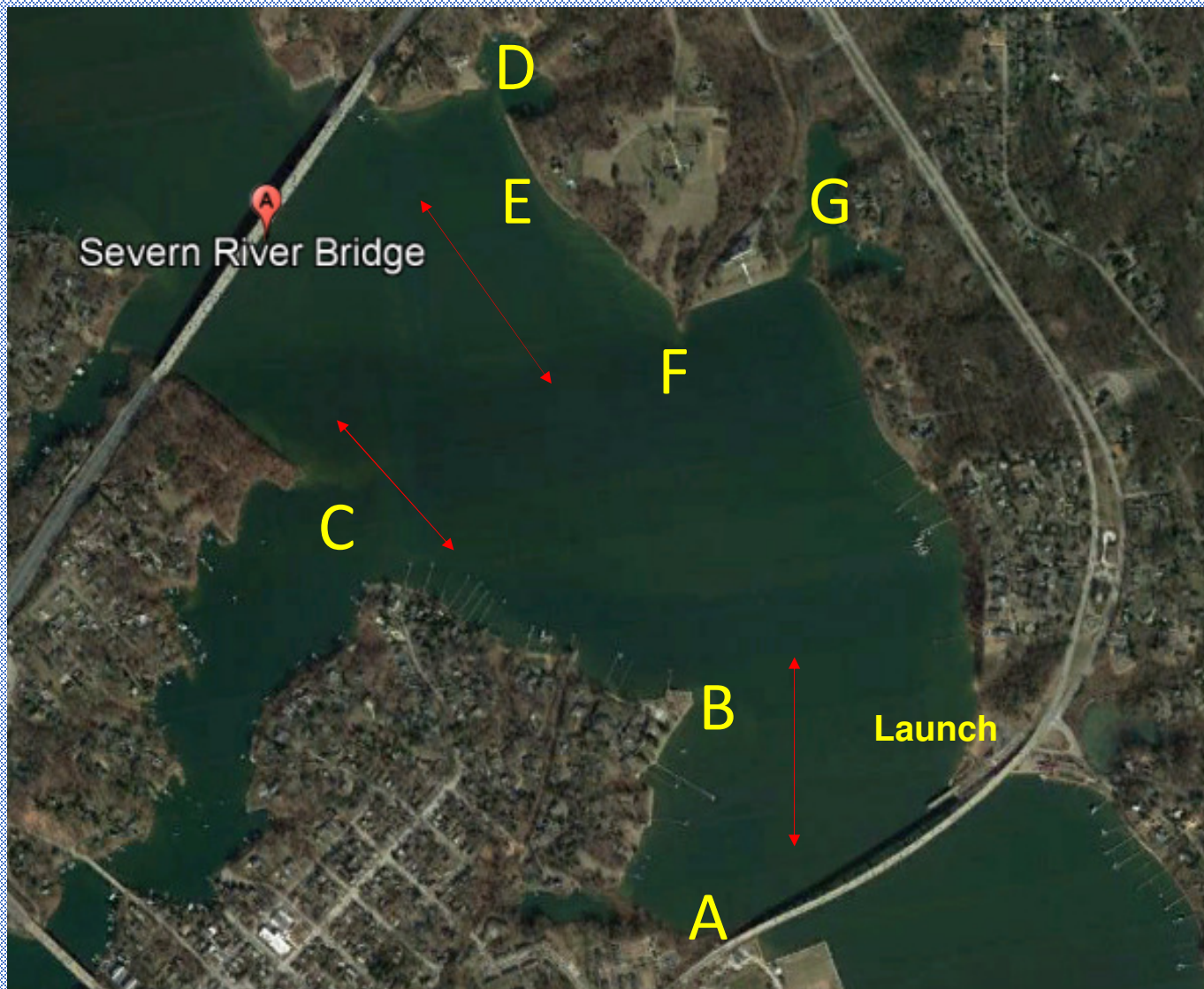
White Perch



Striper



Pickerel



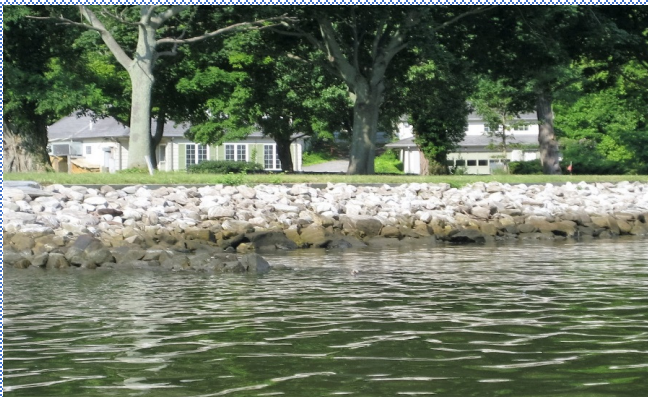
Best Spots

- A. USNA Bridge
- B. Terrapin Point
- C. Weems Creek
- D. Winchester Pond
- E. Cliff Riprap
- F. RR Bridge
- G. Manresa Pond

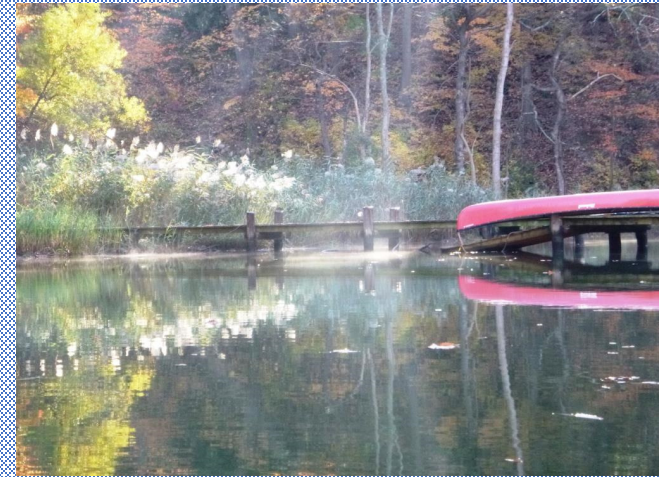
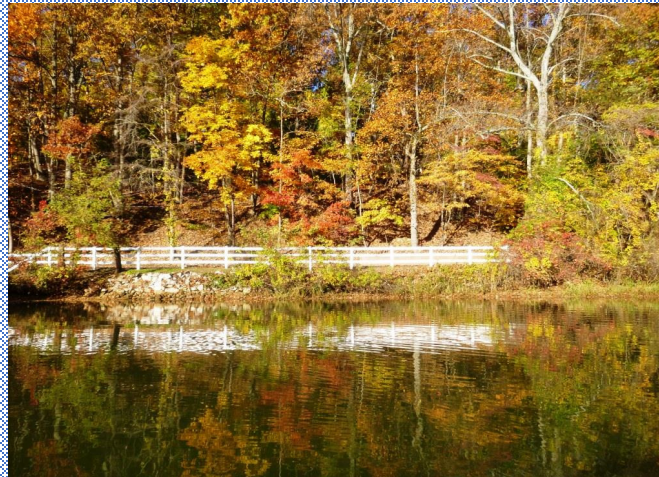
Trolling Routes



A Closer Look at Severn Hot Spots



A few more Severn scenes...



Flies, Lures and Rods



**Fly -- 9 ft., 6 to 8 wt.
Floating WF line.
Bass leader, 10 # mono tippet**



**Spinning -- 2500 series reel,
20# braided line
15 # mono leader**

Larry Meyer

**Patapsco River: Sykesville to
Ellicott City**

Flyfishing the Patapsco River

Recommended Flies

- March Brown
- Mickey Finn
- Hare's Ear Nymph
- Brassy Nymph
- Blue Wing Olive

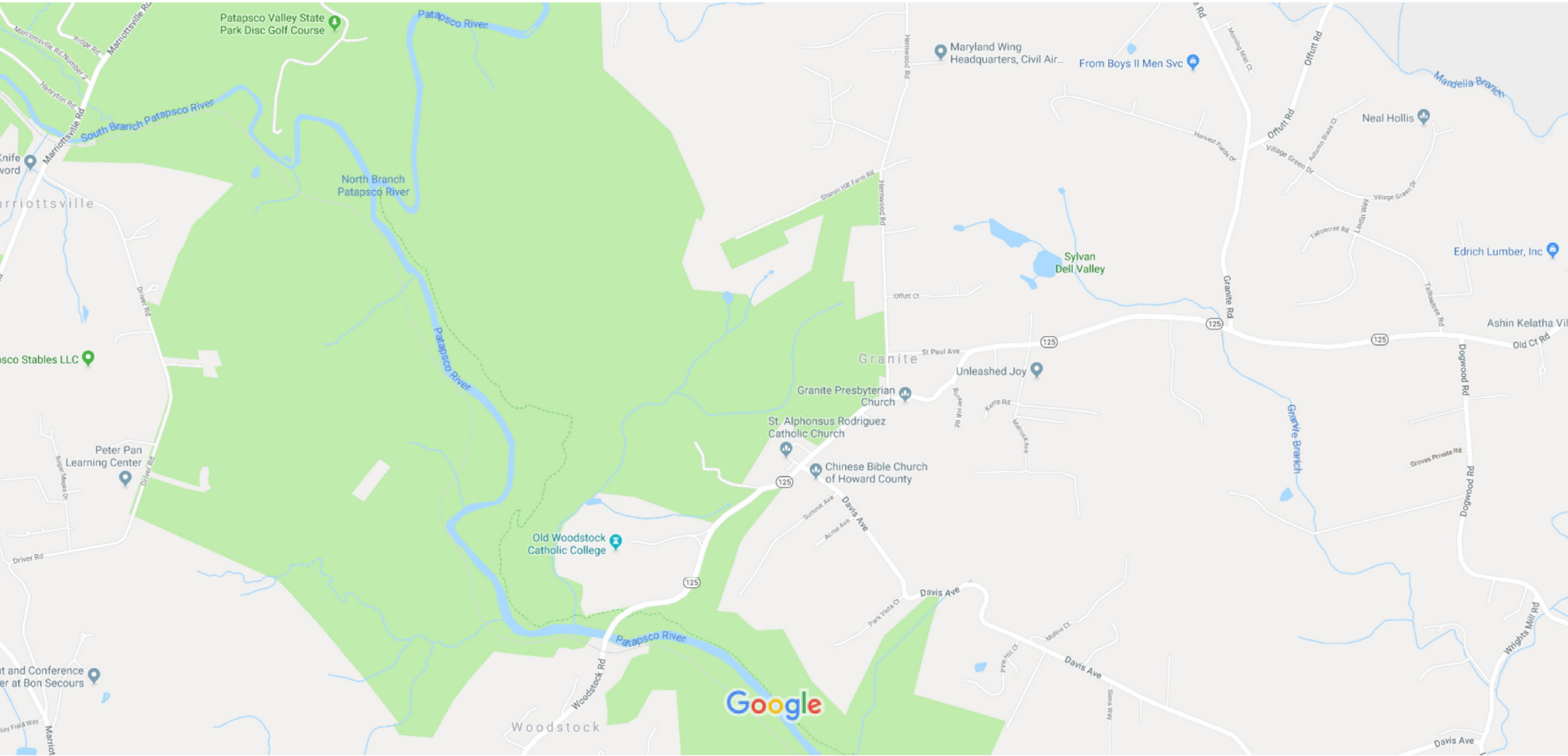
Suggested Equipment

- 9' 6 weight rod
- Floating line
- Sinking tip line (6')

Sykesville to Marriottsville Road



Marriottsville Road to Woodstock Road



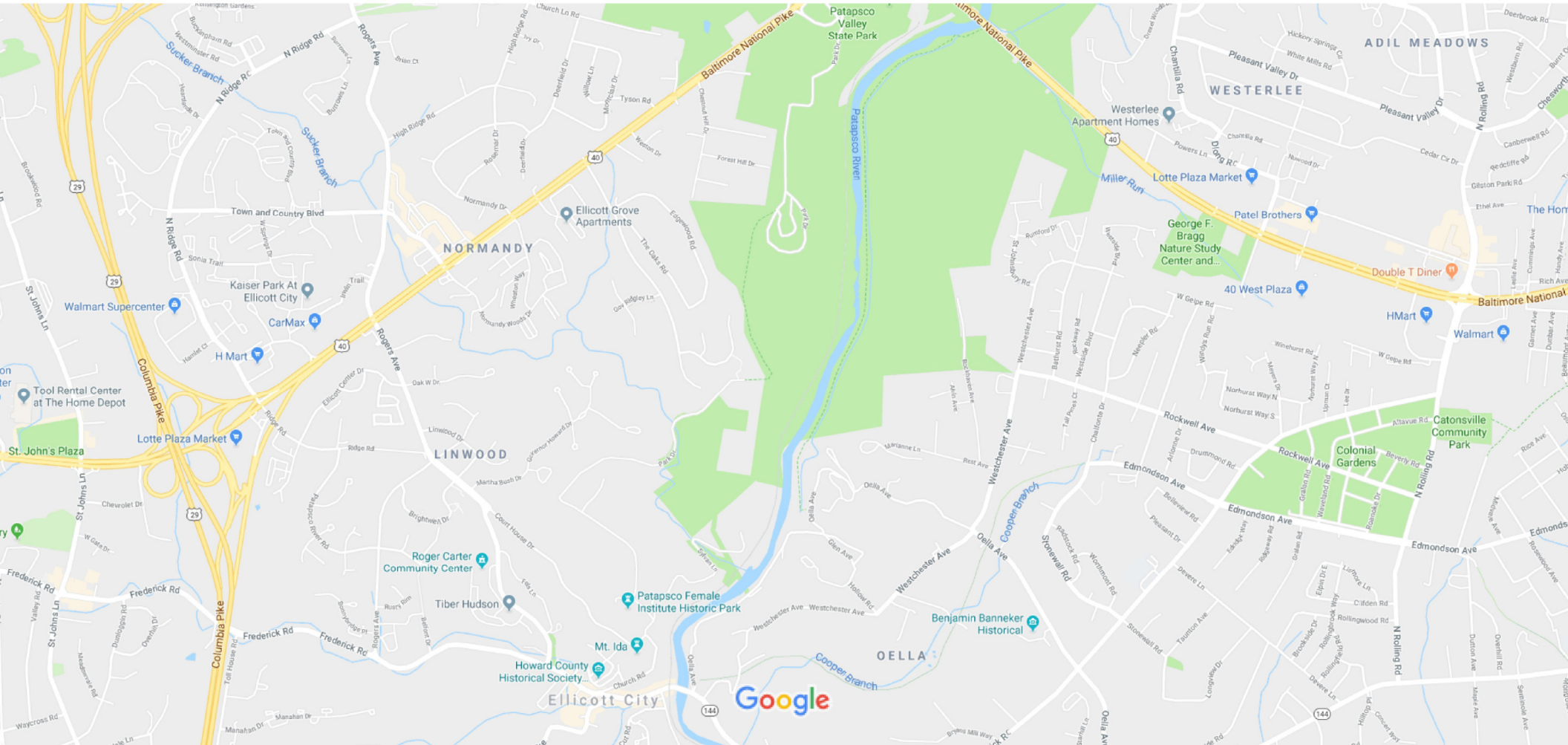
Woodstock Road to Old Frederick Road



Old Frederick Road to Patapsco State Park



Patapsco State Park to Ellicott City



Joe Bruce

Concord Pond, Delaware

Concord Pond



Concord Pond Location

- Take Route 20 Concord Road east from Seaford and a left turn onto Concord Pond Road about two miles from Route 13.
- Go across dam and take the next road on your right, which is German Road, go about a block, turn right into the pond parking lot.
- The ramp is down near the fence on your right.

Concord Pond Fishing Structure

- This pond has just about everything:
 - Lily pads fields
 - Plenty of shore cover
 - At the top end a creek to explore for bass and pickerel with off shots in the creek
- All of the pond is rather shallow with many pad fields
- It covered with hydrilla from June to December, but the main channel and creek is still fishable



Recommended Tackle and Flies

Tackle

- Five to eight weight fly rods with floating line
- Spin rods with 15 to 20 lbs. test line
- Bite tippets- 30 to 40 lbs. test for chain pickerel

Flies

- Bullethead Darters for bass and pickerel
- Typical flies for crappie and bluegills
- Flukes and frogs for the bass and pickerel

Recommended Fishing Techniques

Techniques

- No special fishing techniques are required
- Use what works for you when fishing pads and over weed beds
 - There some very large bass in this pond—I have several 4 ½ pounders
- The chain pickerel are everywhere—you should expect plenty of activity
- There are some big pike in this pond if you can find them.
 - My fishing buddy in one outing caught a 5, 5 ½, 6 and a 7 pound pickerel—that is a big fish!









John Scarborough

Belize

Mike “Pondzilla” Mattia

Ingrams Pond, Delaware

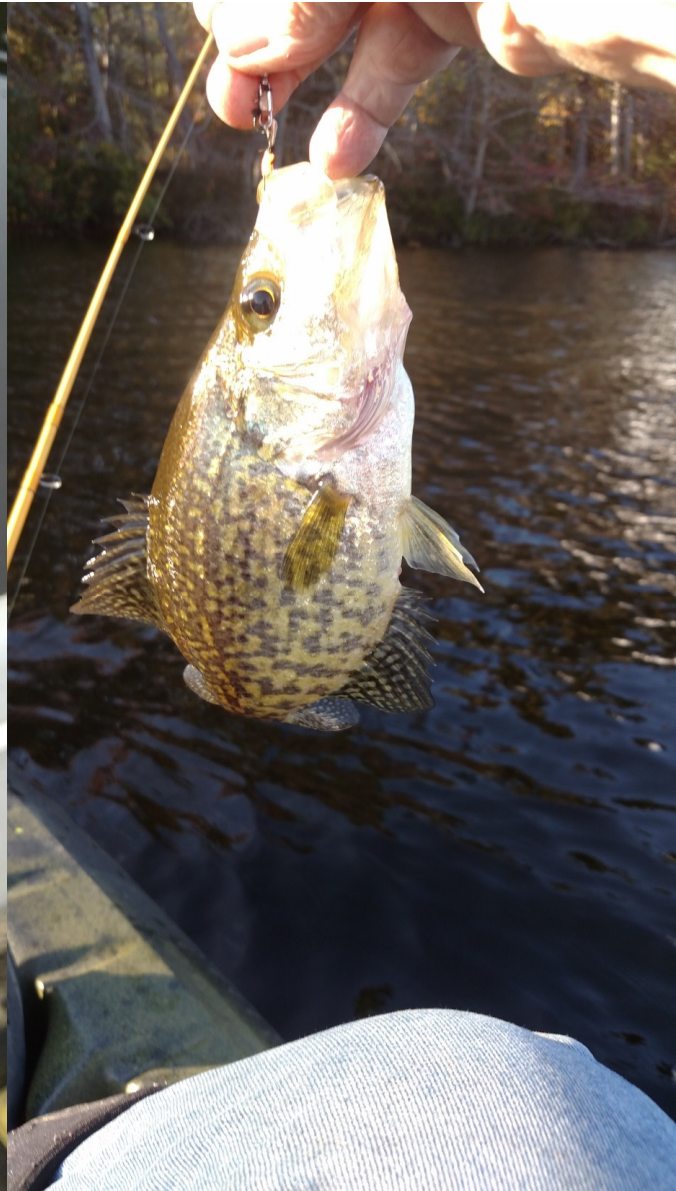
Ingrams Pond, Millsboro DE



Ingrams Pond, Delaware

- Located in Millsboro Delaware.
- Very easy pond to fish with good parking with a very good launch for car top/trailed small boats, kayaks and canoes
- Some shore line fishing also available
- Largemouth bass, crappie, bluegill and pickerel
- Has all of the ingredients a "Top of The Line Pond " needs:
 - Clean water, lots of structure both wood and lily pads.
 - Low pressure from local fishermen











**Please make plans to
join us on one of our
many FSFF outings to
the Delaware Ponds!**

Paid Announcement: Mike “Pondzilla” Mattia