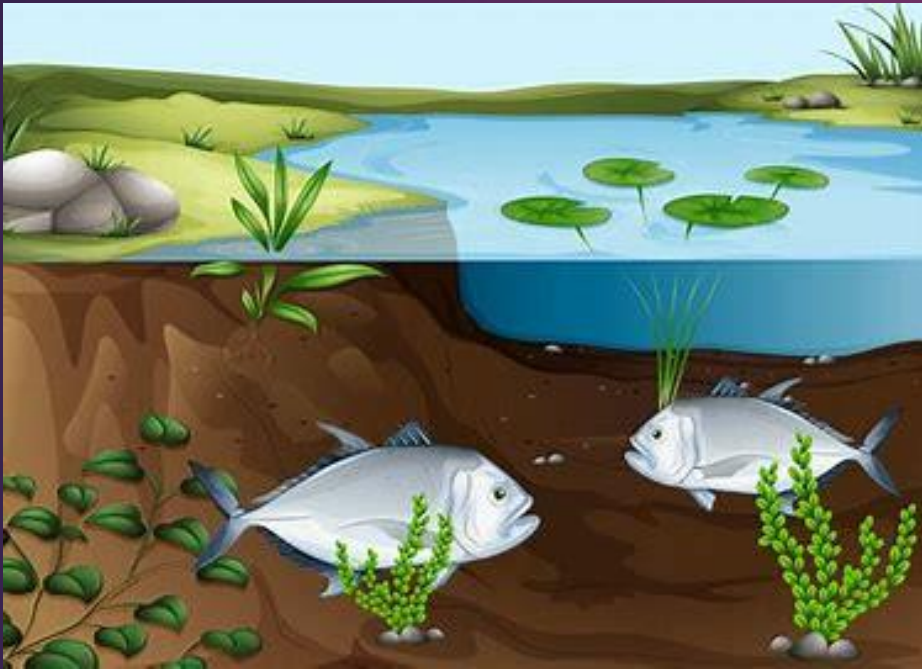


My Favorite Fishing Ponds



MARK BANGE

1 NOVEMBER 2023

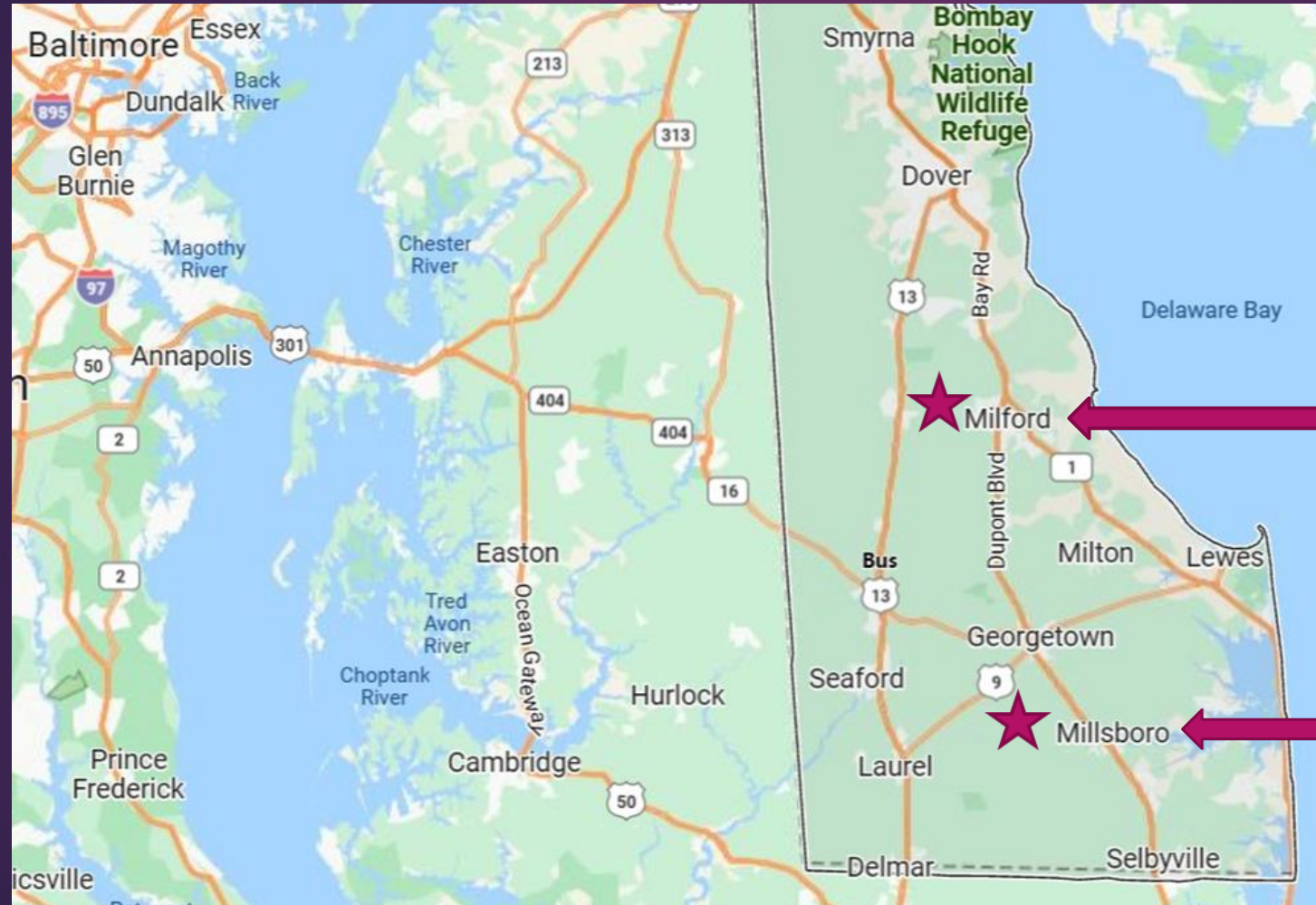
**Delaware's
Blairs Pond
&
Ingrams Pond**

Topics

- Pond Locations
- Characteristics
- Productive spots
- Rods & Flies
- Tactics
- Typical catches



WHERE IN DELAWARE?

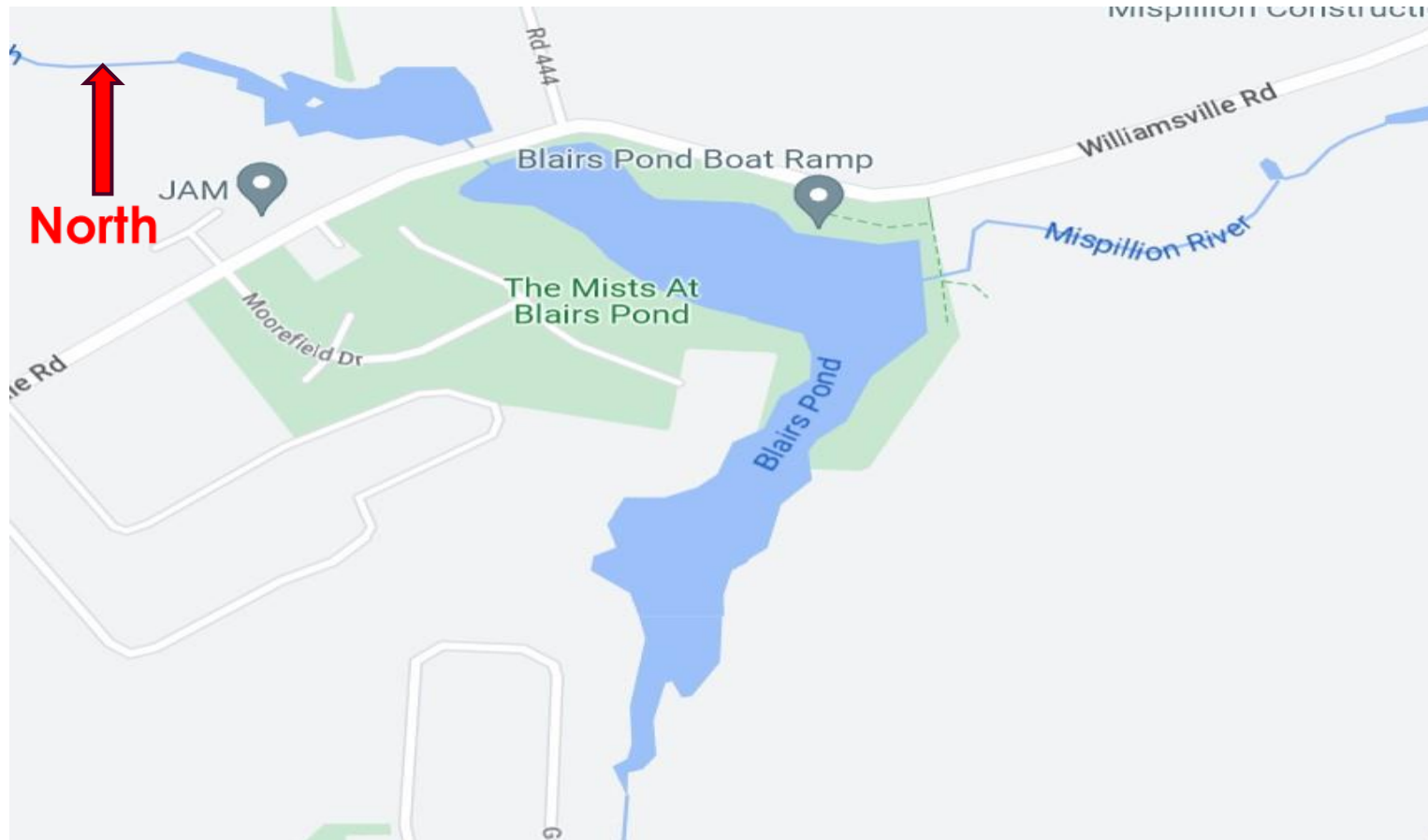


Blairs Pond
Near Milford
60 miles
from Annapolis

Ingrams Pond
Near Millsboro
80 miles
from Annapolis

Blairs Pond

Blairs Pond Road & Williamsville Road, Milford, DE



29 acres
7 feet Max. Depth

Species

- LM Bass
- Pickerel
- **Bluegill (Target)**
- Crappie

April
thru
June



Blairs Pond

Ramp and Parking

Blairs Pond Road & Williamsville Road, Milford, DE



Convenient Launch

- Concrete ramp with gentle slope
- Ramp is on north side of pond
- Parking for 20 vehicles and trailers
- Short walk from parking to water
- No Port-A-Potty (No woods – bring bottle)



Blairs Pond

Characteristics & My Favorite Spots



Key Features

- Shallow
- Shaped like a “7”
- Dam on east end (near launch)
- Shore fishing near dam and parking lot
- Surface vegetation thickest on upper west point and lower southern point
- Bordered on west by housing development
- Hiking trails on east

EXCELLENT BLUEGILL POND



Ingrams Pond

24184 Godwin School Rd, Millsboro, DE



24 acres
7 feet Max. Depth

Species

- LM Bass
- **Pickrel (Target)**
- Bluegill
- Crappie

November
thru
March



Ingrams Pond

Ramp and Parking

24184 Godwin School Rd, Millsboro, DE



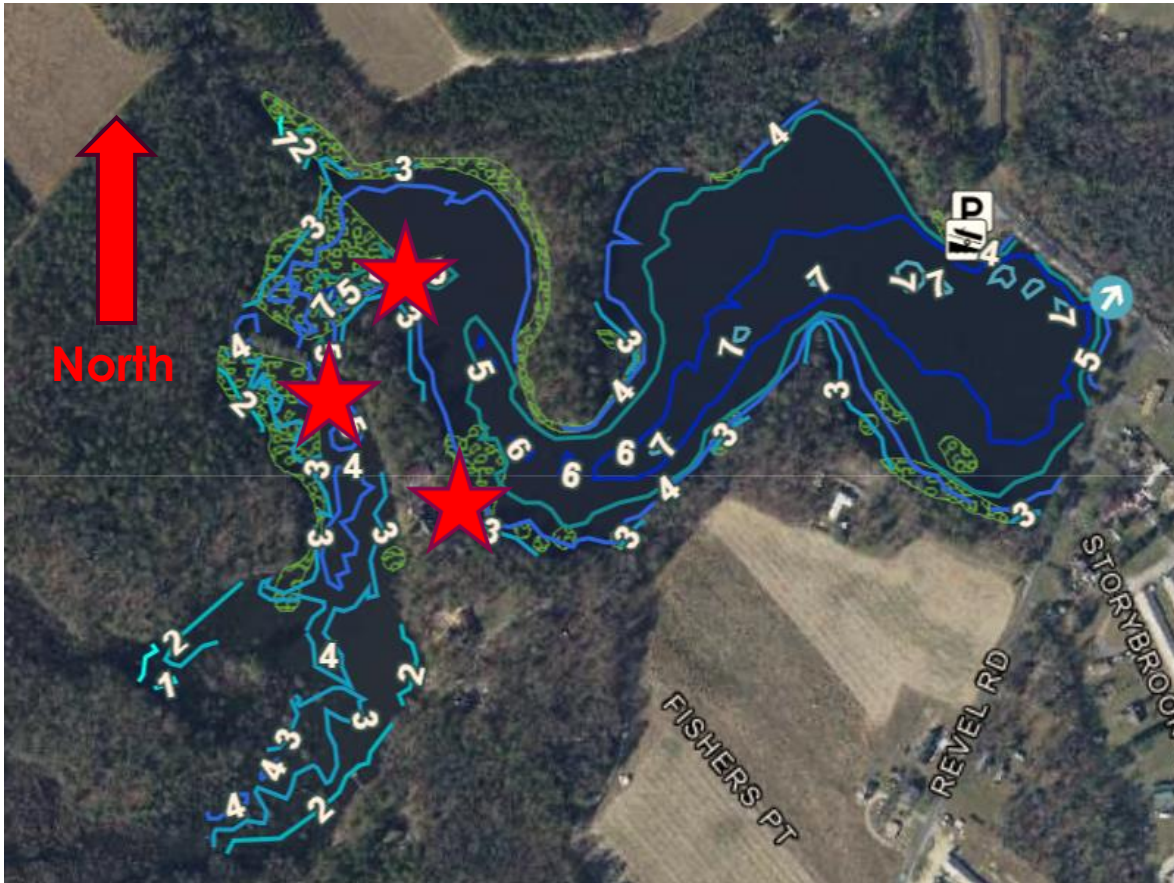
Easy Launch

- Paved lot on NE side of pond
- Room for 12 vehicles and trailers
- Concrete ramp
- Soft launch next to ramp
- Short walk from parking to water
- No Port-A-Potty (But woods are nearby)



Ingrams Pond

Characteristics & My Favorite Spots



Key Features

- Shallow
- General east to west orientation
- Serpentine shape
- Dam on east end (near launch)
- Limited shore fishing near ramp
- Surface vegetation thickest on west end
- Beware of submerged stumps

EXCELLENT PICKEREL POND



Blairs Pond & Ingrams Pond

Gear and Tactics



Rods

- **Blairs** -- 4/5 wt. for **Bluegills** (2 or 3 rods)
- Floating line (10# Tippetts)
- **Ingrams** -- 7 wt. for **Pickerels** (2 rods)
- Floating & Intermediate line (30# Tippetts)

Target Areas

- Shade (**Blairs**)
- Gaps and edges of pads (**Blairs**)
- Dying pad areas (**Ingrams**)
- Deadfall (**Both ponds**)

Blairs Pond & Ingrams Pond Flies

► Blairs Pond

Spring to early summer for **Bluegills**

Flies -- Topwater, Streamers

Size 6 - 2 Hooks (Prevents Gut-hooking)

Foam Spiders, Poppers, Wooly Buggers,
Bully Buggers

SLOW HALTING RETRIEVALS WORK BEST



► Ingrams Pond

Fall and winter for **Pickerels**

Flies -- Streamers

Size 2/0 Hooks

Articulated Crystal Buggers,
Bendbacks

STRIP, STRIP, PAUSE – VARY SPEED



Typical Target Species Catches

BLAIRS



INGRAMS



Bycatches Both Ponds



Looking Ahead to 2024

Saturday, 17 February & Saturday, 2 March

Kayak Fly Fishing in Local Waters



Mark Bange
17 February 2024



THREE SIMPLE & PROVEN BLUEGILL FLIES

MARK BANGE
FSFF
MARCH 2024



Two future presentations on techniques and flies that I use in ponds and tidal creeks

My Favorite Fishing Ponds



THANK YOU

Mark Bange
mbange54@gmail.com
410-591-5254

Email or call me for a copy
of these slides