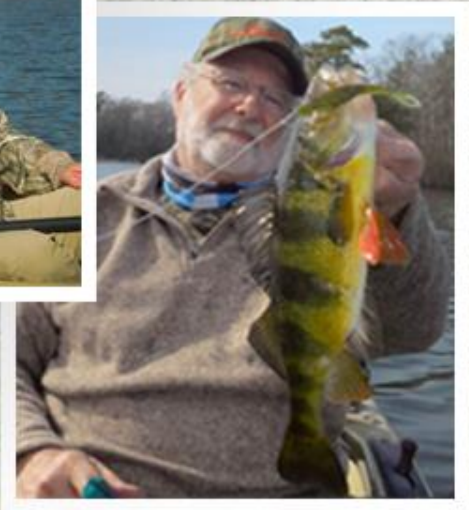


Shallow water Part I

Shallow Water Tips & Techniques Rigging for Success



What is shallow water to me?

- Four feet or less
- With stealth, every fish in both salt and freshwater can be caught.



My Basic Pond & lake Arsenal Flukes and Flies



The Bullethead Darter is the best shallow water finesse fly I have ever tied or fished.



For Weedy Waters



Rigging Flukes



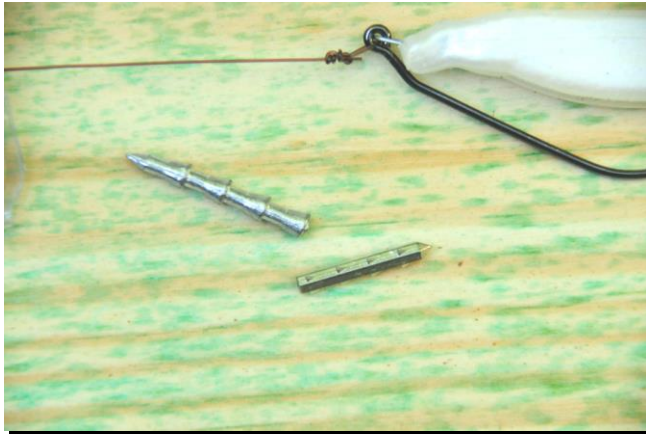


By cutting the tip flush you accomplish two things...one it is easier to insert the hitching post and secondly it adds a little more wobble to the fluke.

Weighting Flukes

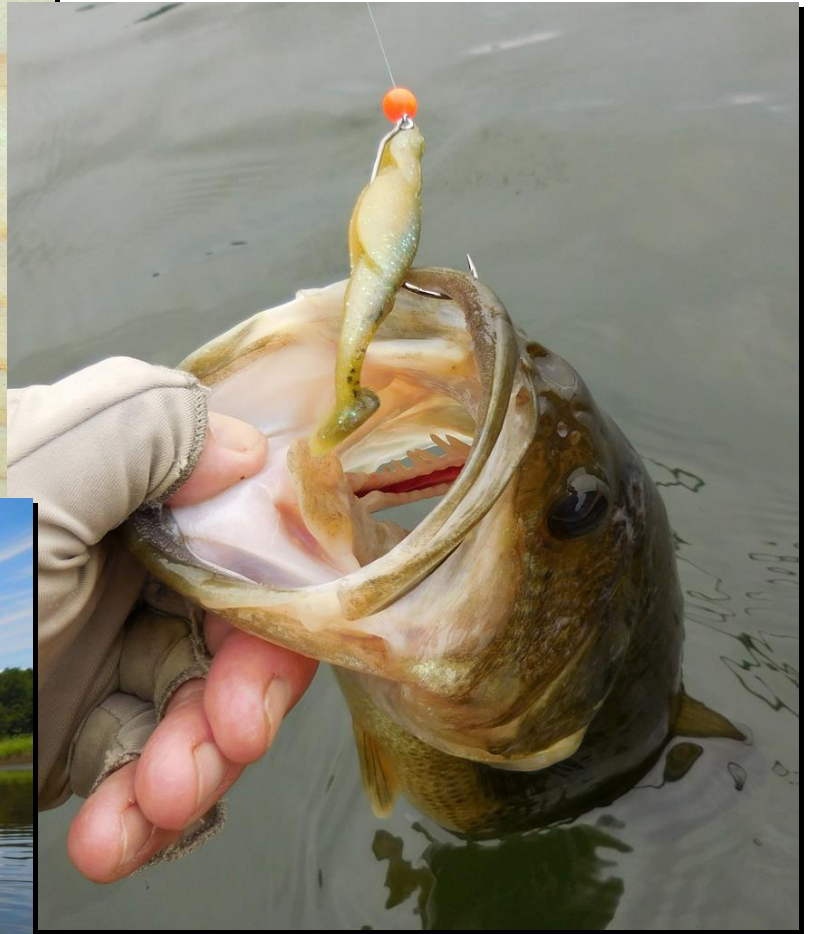


Not Good



GOOD





There is always three moods of fish

- 1. Aggressive
- 2. Neutral
- 3. Passive



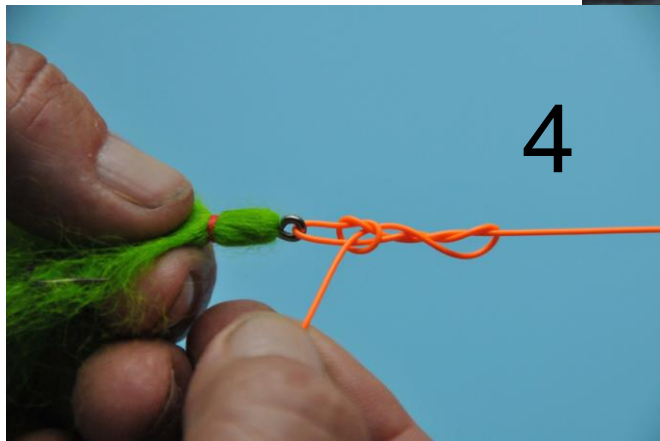
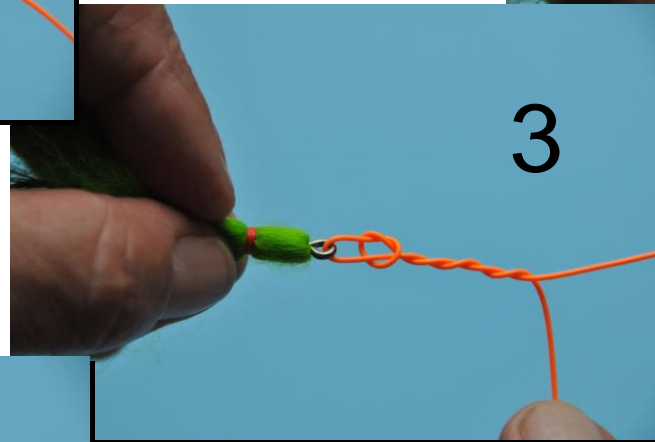
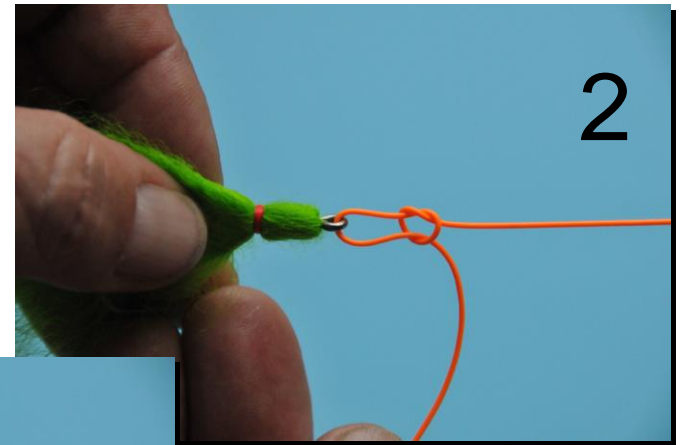
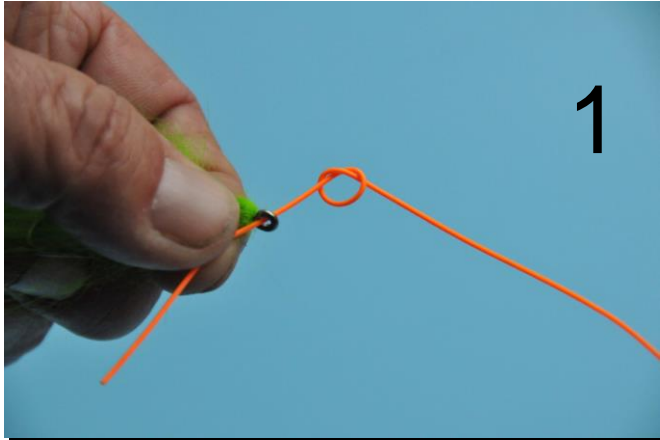
Strikes and Follows

- I believe there is no such thing as a “short strike.”
- I’m either moving the lure too fast for the fish’s aggression level.
- Or using the wrong size lure/fly.
- Color could also be the problem, here is where a fishing partner comes in handy, use different color or size lures.

Always animate the fly or lure, learn to tie the non-slip loop knot.



Tying the Non-Slip Loop Knot



The Non-Slip Loop Knot is a 100% Knot when tied properly, but.



During the fight the loop can get caught in the hitching post

When I'm fishing for toothy fish I use a thirty or forty pound bite tippet



Three reason to use a bite tippet

1. When fishing toothy fish
2. When fishing in heavy weeds and grass
3. Can be used as a handle to pull fish out of heavy cover



Contrast- The Illusion

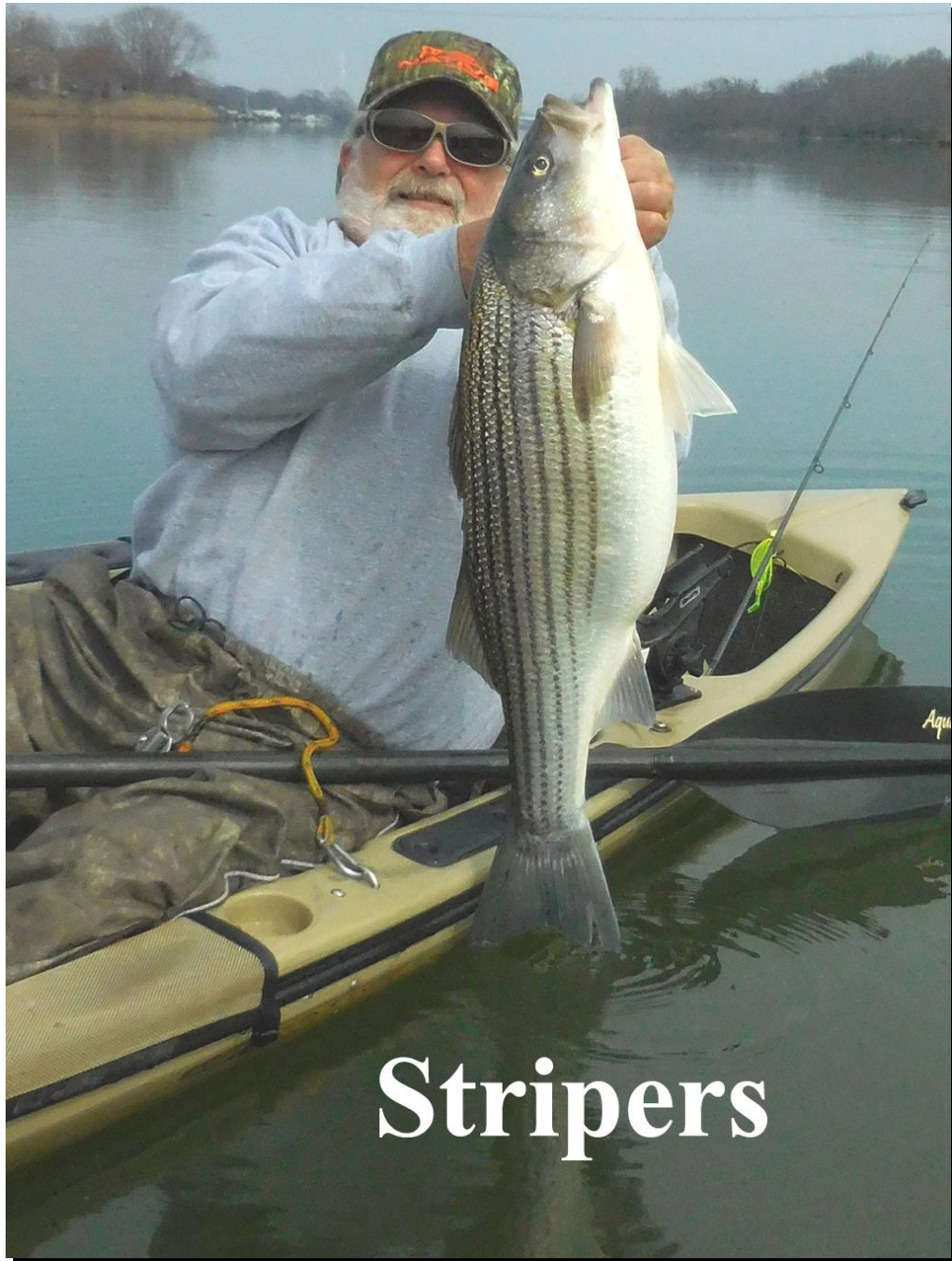


Retrieving Flukes & Flies

- 1. The Steady Retrieve- This covers a lot of water- good for the salt
- 2. The Crank (strip) and Pause- This is my “go to” retrieve
- 3. The Slow Crank(strip) and Pause- This is my “go to” when the fish are neutral or passive.

More Retrieves

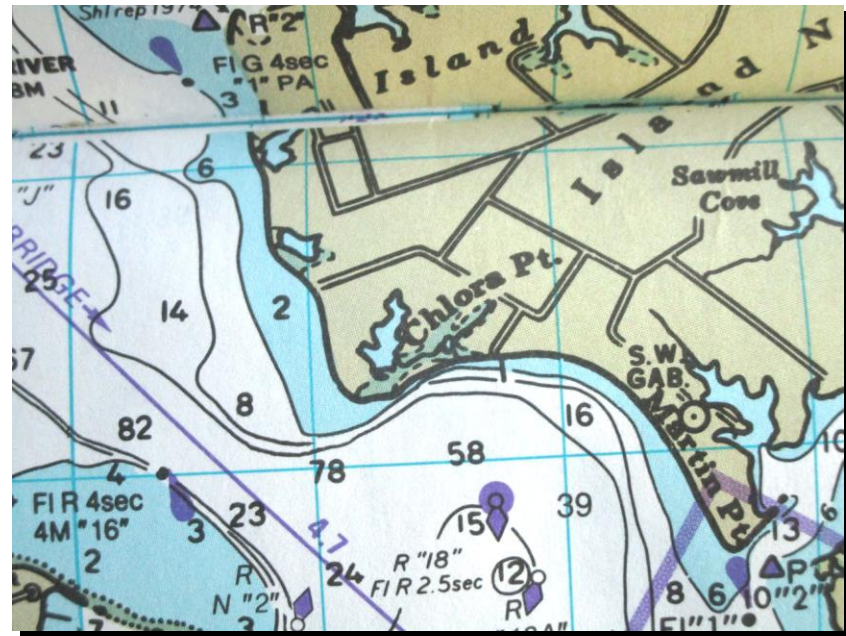
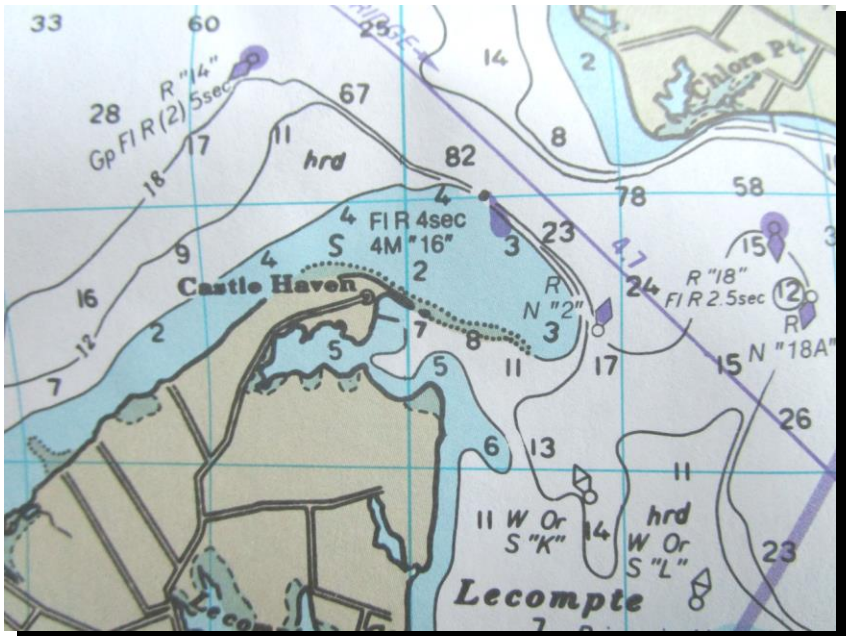
- 4. Erratic Retrieve- Twitch and Pause
- 5. Panic Retrieve- Skipping the fluke or fly across the surface- minnows escaping
- During a days fishing I will use everyone of these retrieves



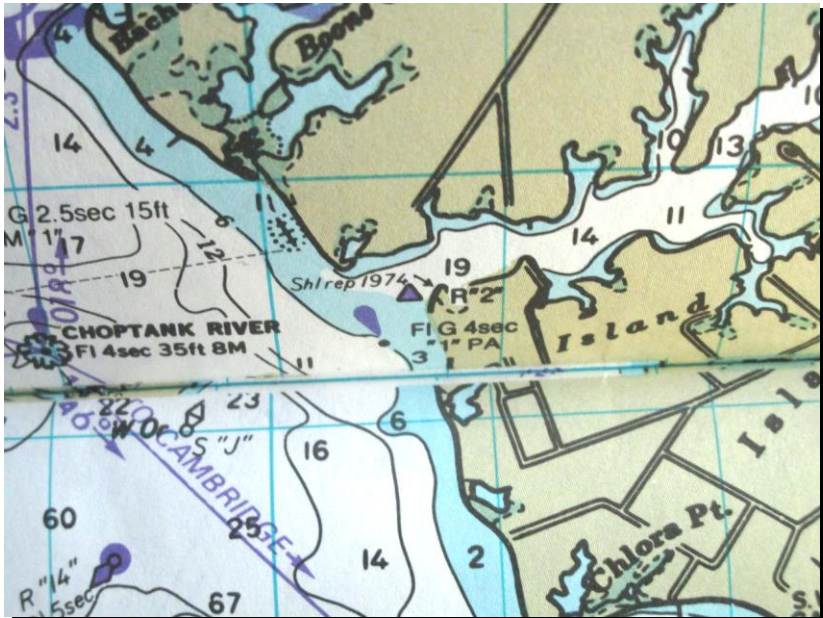
Stripers

- Stripers like low light or cloudy/misty/rainy days
- Fish the shallows on low light
- Be stealthy





Fish where deep water come close to shore





Bass

Fishing

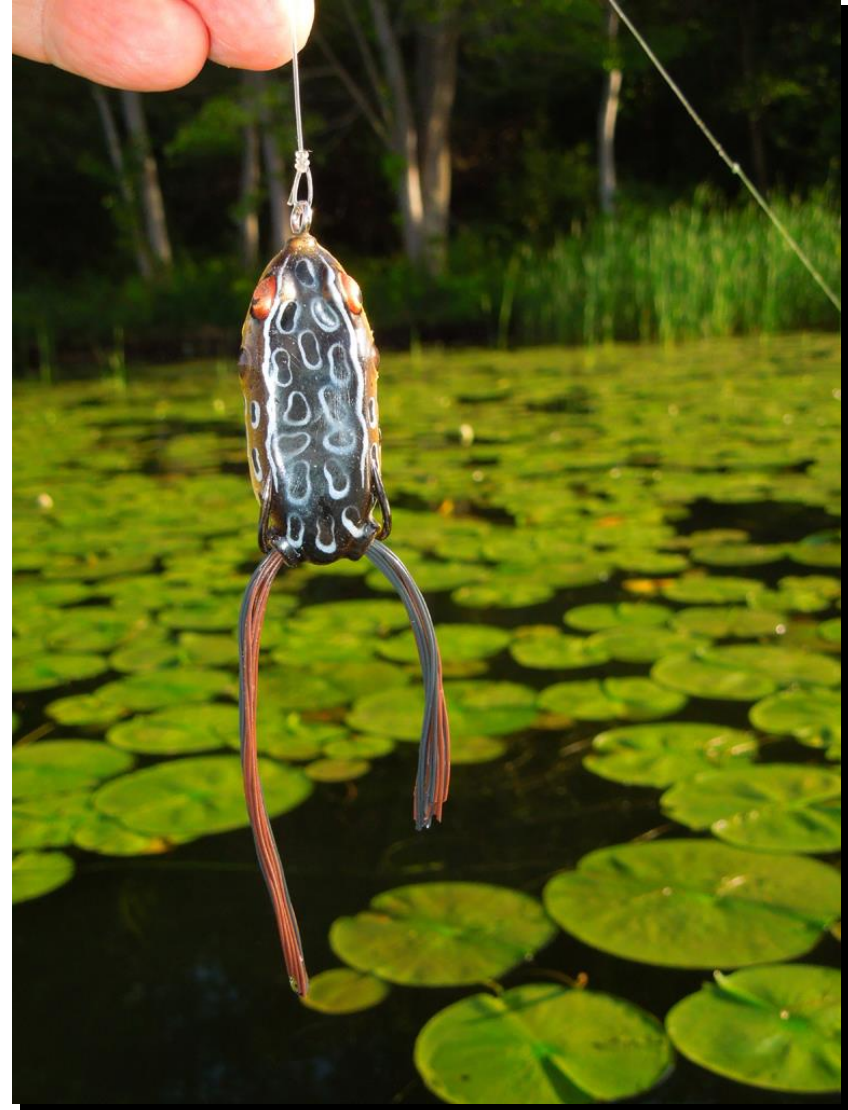






I like to rig
my frogs
upside
down, fish
see a
silhouette,
the back is
darker

Frogging Tips

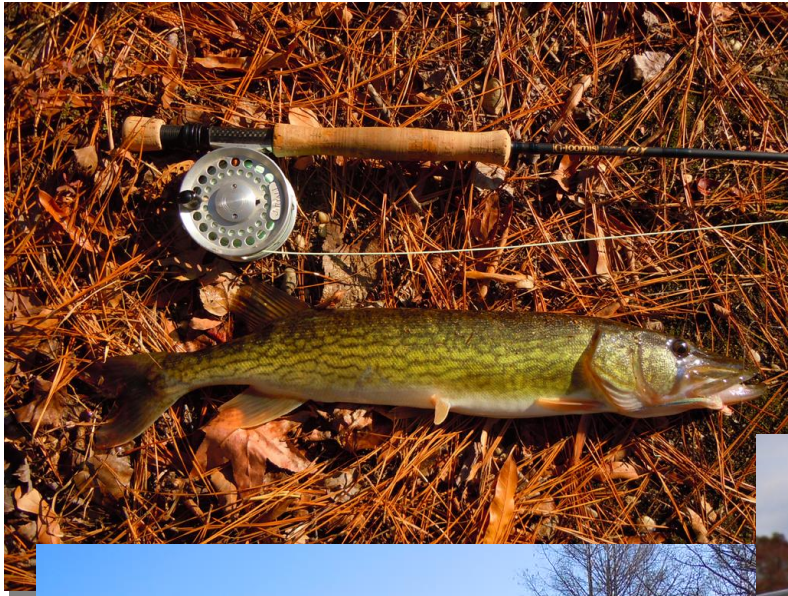


A Chain Pickerel fish is shown in profile, swimming towards the right. It is hooked on a fishing line that runs vertically through the center of the image. The fish has a long, slender body with a pattern of dark spots and stripes. Its mouth is open, and a bright yellow, star-shaped lure is visible inside. The background is a dark, rippling surface of water.

Fishing

for

Chain Pickerel



Pickerel like a “roof over their heads,”
They are found around wood and trees
early in the season until the pads start
to hit the surface of the water, then they
move to these until the pads start to die
back and they go back to the trees.



Shallow Water Part II

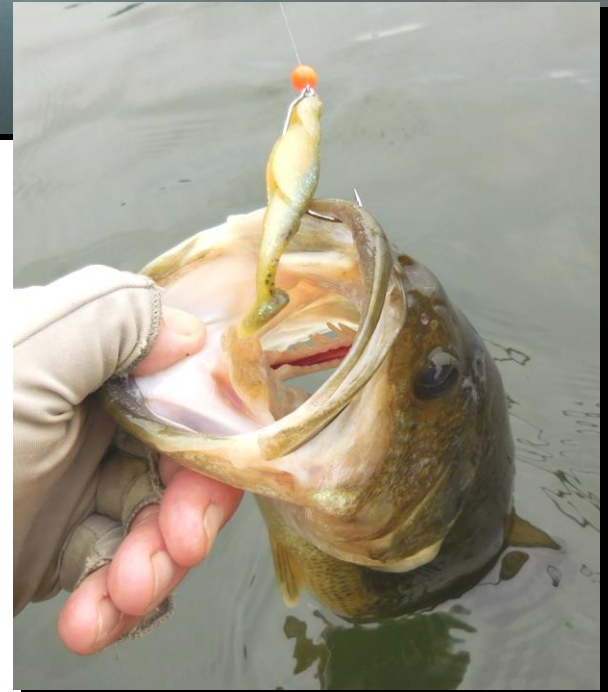
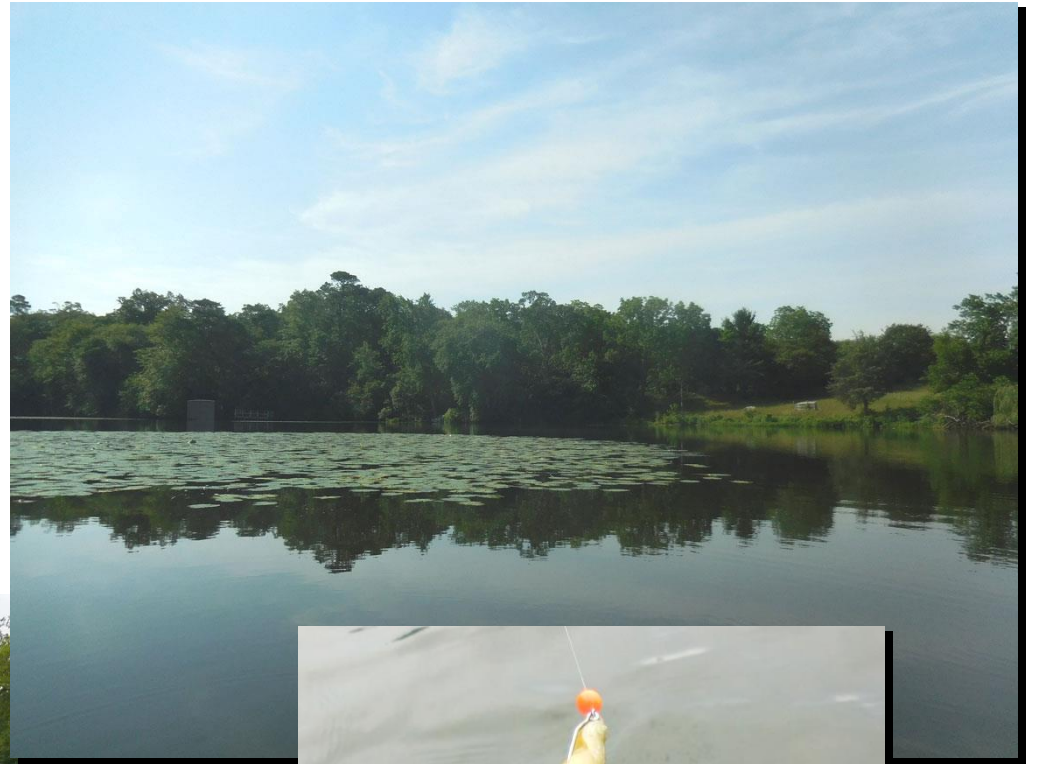
Don't Waste Time/Keep Moving

- Bass, pickerel, snakeheads and striper are aggressive fish there is no need to make multiple cast to the same spot unless you fishing weed or grass beds where the fish might be back in the cover and a few cast might pull them from the cover.

Fishing Pads



Finding & attacking Fish in Pads



A good tip- Fish from the shore out







Sometimes
speed is the
trigger,
Make the
first cast
outside of
the pads
them attack
the inside

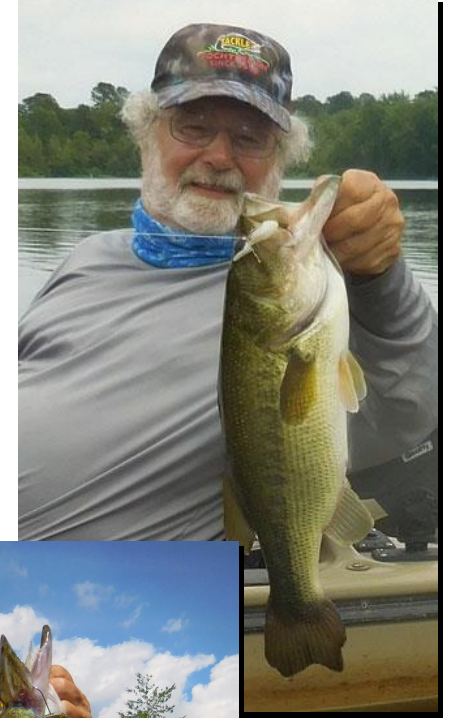
Important Pads Tips

- 1. morning- fish outside
- 2. daytime- fish inside
- 3. shoreside- fish from shoreline out
- 4. breezy- fish with breeze in your face
- 5 casting- short and fan casting.
- 6.hookups in the pads, watch the rod tip

The two or three prong attack will up your hookup rate



Some Quality Pad Fish



Panfish



#4 Clouser Minnow and the jig equivalents saltwater



The Bullethead Darter & a Black Woolly Buggger





Saltwater Panfish





For the fly rod use a ten foot sink-tip and a
14 lb tippet

Fishing for Snakeheads



by Joe Bruce

Delaware, Maryland, & Virginia have finally allowed the snakehead to be caught & released. Here is the statement in the Maryland Fishing Guide 2020

“ It is against Maryland, Virginia and federal law to possess, import or transport LIVE Northern Snakeheads.

If you catch a snakehead and WANT TO KEEP IT, you must immediately kill the fish.”





My essential
arsenal for
Snakeheads

Always make the three casts to
the same spot

1+3

2+3

3+3





15 ½ lbs, 40"

Kayak Advantages

- Quiet
- Can fish shallow water
- Position kayak against the shore- cast parallel to the shore
- Low profile, allows close up movement
- Don't stand up

Kayak Tips





Color Changes



3 2 1
Casting Sequence

Important Tips to Remember

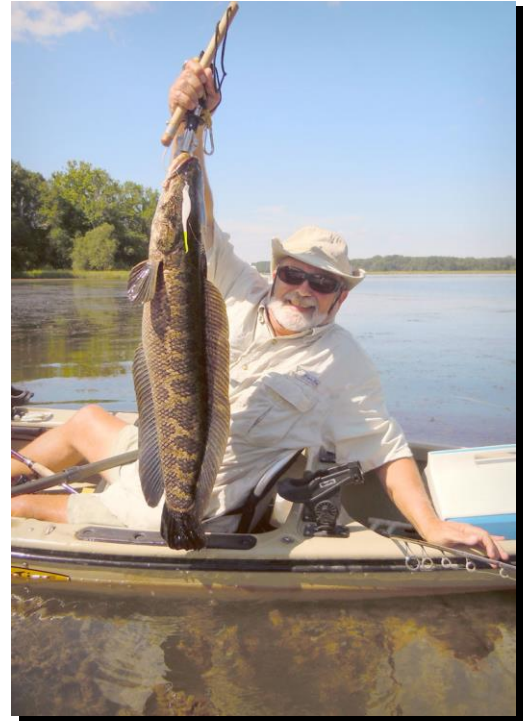
- 1. I use Mustad 91768BLN or the Mustad 32786BLN which has a round bend & stout hook.
- 2. Bend the hook a little off center.
- 3. Use nail weights or lead wire to weight the hook.
- 4. Put a 6 to 8 mm bead in front of the fluke to ward off grass, pads or stems
- 5. Use 30 or 40 lb mono for bite tippets
- 6. Always use a loop knot with a bite tippet

MORE POINTS

7. Flukes can be rigged standard or upside down depending on the water conditions
8. Fish from the shore out when fishing pads.
9. Try to keep the boats close and parallel to the shore to keep the bait in the target zone longer.
10. Be stealthy, wear clothes that blend in.
11. Use the back of the paddle in heavy grass.
12. Use the “ two or three prong” attack to up the odds of a hook up.
13. Try to keep the paddle below the shoulder to reduce flash.
14. Snakeheads and pickerel like sun, bass and stripers prefer cloudy days.

Favorite Waters

- White Perch- Trappe, Leeds Creek
- Yellow Perch- Wye River, Millsboro Pond
- Stripers- Trappe Creek, Severn, Marley Creek, Magothy & Severn
- Northern Snakeheads- Potomac and the Blackwater System







For more
information
check out my
“Shallow
Water” book
at
joebruce.net

